

Course  
&  
Test Series

 CBSE

 ICSE

 NTSE

 Banking & Insurance

 Central Govt. Service

 State Govt. Services

 LAW Entrance

 MBA Entrance

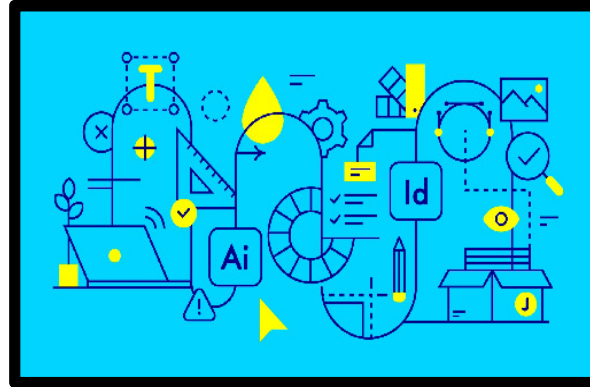
 Railways & Metro Services

...many more

abhyasonline.in

Self-Made Assignment - Adobe Illustrator

Export and File Format



1. Set Up the Document

- Open Adobe Illustrator.
- Go to **File > New** and choose a suitable artboard size (e.g., 1920×1080 px).
- Set **Color Mode** to RGB if it's for digital use.

2. Create the Background

- Use the **Rectangle Tool (M)** to draw a rectangle covering the artboard.
- Choose a **cyan blue** color fill.
- Lock this layer (**Object > Lock > Selection**) to avoid moving it accidentally.

3. Use the Line and Shape Tools

- Use **Line Segment Tool (L)**, **Ellipse Tool (L)**, and **Rectangle Tool (M)** to create the geometric shapes.
- Hold **Shift** to maintain proportions (perfect circles, squares, etc.).
- Use **Stroke Only** (no fill) and set stroke to a visible weight (e.g., 2 pt).

4. Add Icons and Interface Elements

- Use the **Pen Tool (P)** for custom lines and paths (e.g., curved arrows, gear parts).
- Use **Shape Builder Tool (Shift + M)** to merge or subtract shapes.
- Use Illustrator's **icon libraries** via **Window > Symbols** or download flat icons (like gears, pencils, etc.) from **Adobe Stock** or websites like **Flaticon**.

Course  
&  
Test Series

Self-Made Assignment - Adobe Illustrator

Export and File Format

5. Add Typography

- Use the **Type Tool (T)** to add letters like "Ai", "Id", "T".
- Use sans-serif fonts like **Helvetica**, **Montserrat**, or **Futura** for a clean look.
- Align text to the center and place it inside shapes (like rectangles or circles).

6. Apply Colors

- Use the **Eyedropper Tool (I)** to match colors if needed.
- Use a **limited palette** of 3-4 colors (e.g., yellow, blue, black, white).
- Apply color fills to certain shapes and keep others in stroke-only mode for contrast.

7. Create Repeating Elements

- Use **Copy (Ctrl/Cmd + C)** and **Paste in Place (Ctrl/Cmd + F)**.
- Use **Reflect Tool (O)** or **Rotate Tool (R)** for symmetry.
- Use **Align Panel (Window > Align)** to keep elements organized.

8. Add Final Touches

- Group related elements (**Ctrl/Cmd + G**).
- Use **Layers Panel** to keep objects organized.
- Add shadows or dotted lines using stroke styles.
- Check **stroke alignment**, **cap**, and **corner settings** in the **Stroke Panel**.

9. Save and Export

- Save the working file: **File > Save As (.AI)**
- Export for web or presentation:
- **File > Export > Export As**
- Choose **PNG**, **SVG**, or **PDF** depending on your needs.



CBSE



ICSE



NTSE



Banking &  
Insurance



Central Govt.  
Service



State Govt.  
Services



LAW  
Entrance



MBA  
Entrance



Railways & Metro  
Services

...many more

abhyasonline.in

